



## Lined Coat for Connie Lowe Big Stella Dolls

©By Petrana  
sasha-doll.com



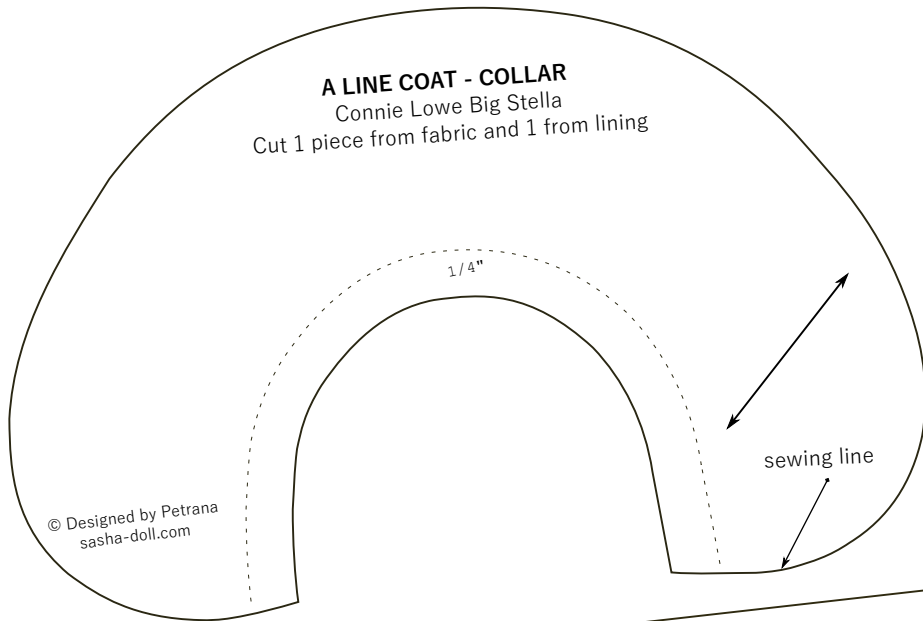
This page provides additional information regarding the patterns. Please read it fully before printing the pattern page(s) that follow it. This page itself doesn't have to be printed. These patterns are distributed as a PDF file which is great at preserving measurements/scale. But in order to get the correct size of the patterns printed you will have to ensure you will print the file to a scale of 100%. Apple MAC and Windows PC use different terminology when it comes to printing so, it's not easy to provide detailed instructions for every case. In general though, you are aiming to print the document to real size. Various settings that you might see i.e. "Fit to Page", "Scale to Fit", "Crop to Fit" are all incorrect and should be avoided since they change the real size of the document.

**The way to verify the printout is correct is to confirm that the 1 cm / 1 inch squares present on the pattern page(s) are of those same exact distances by measuring them.** Also, this document comes as A4 size but the patterns can be successfully printed even on "Letter" size paper since sufficient margins have been left on the top and bottom of the pattern page(s). All that is required is to print to scale of 100%.

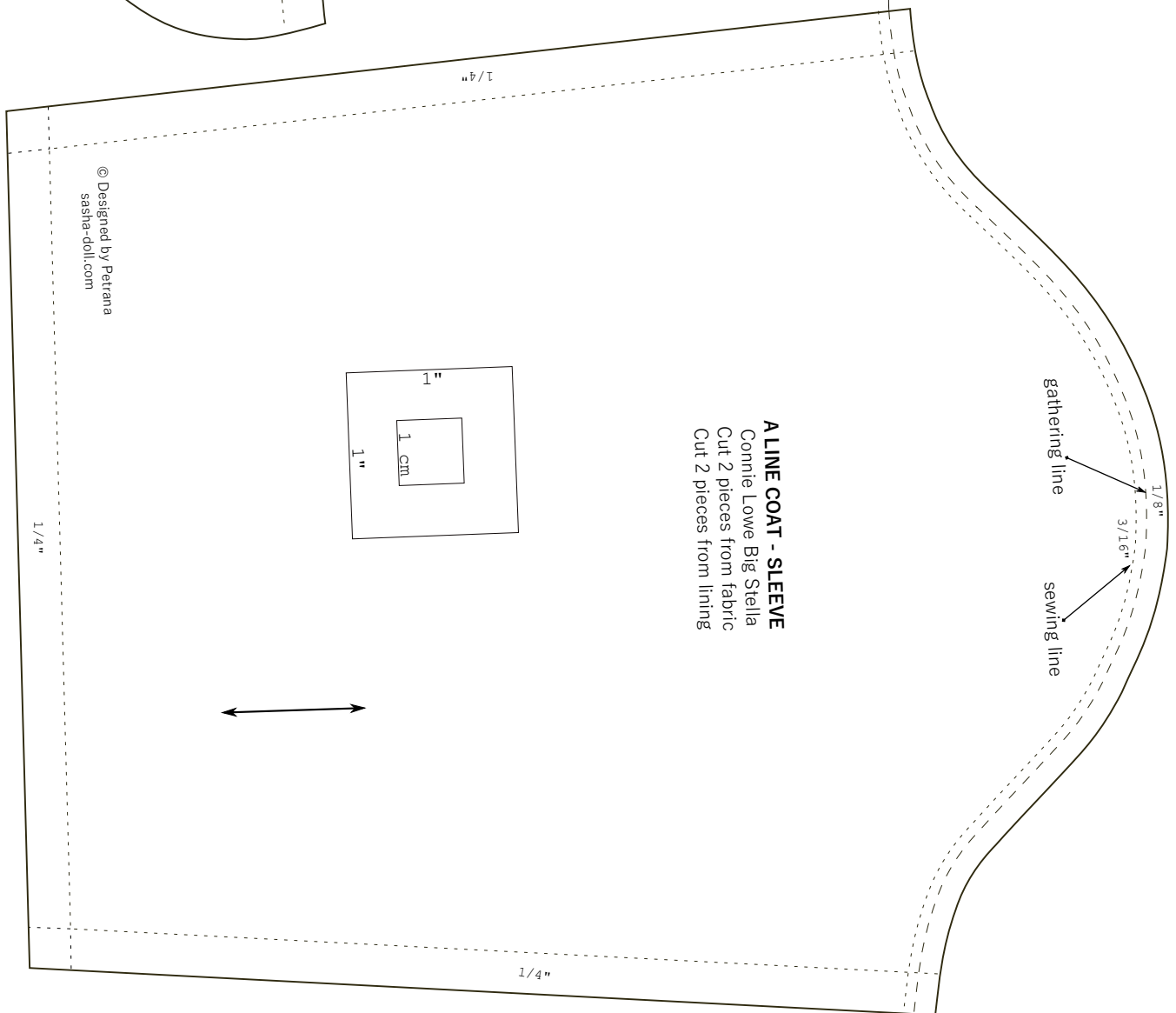


**Important: print page to 100% scale! (page 2 of 3)**

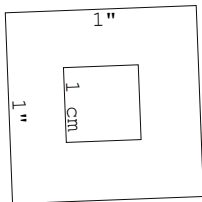
**A LINE COAT - COLLAR**  
 Connie Lowe Big Stella  
 Cut 1 piece from fabric and 1 from lining



© Designed by Petrana  
 sasha-doll.com



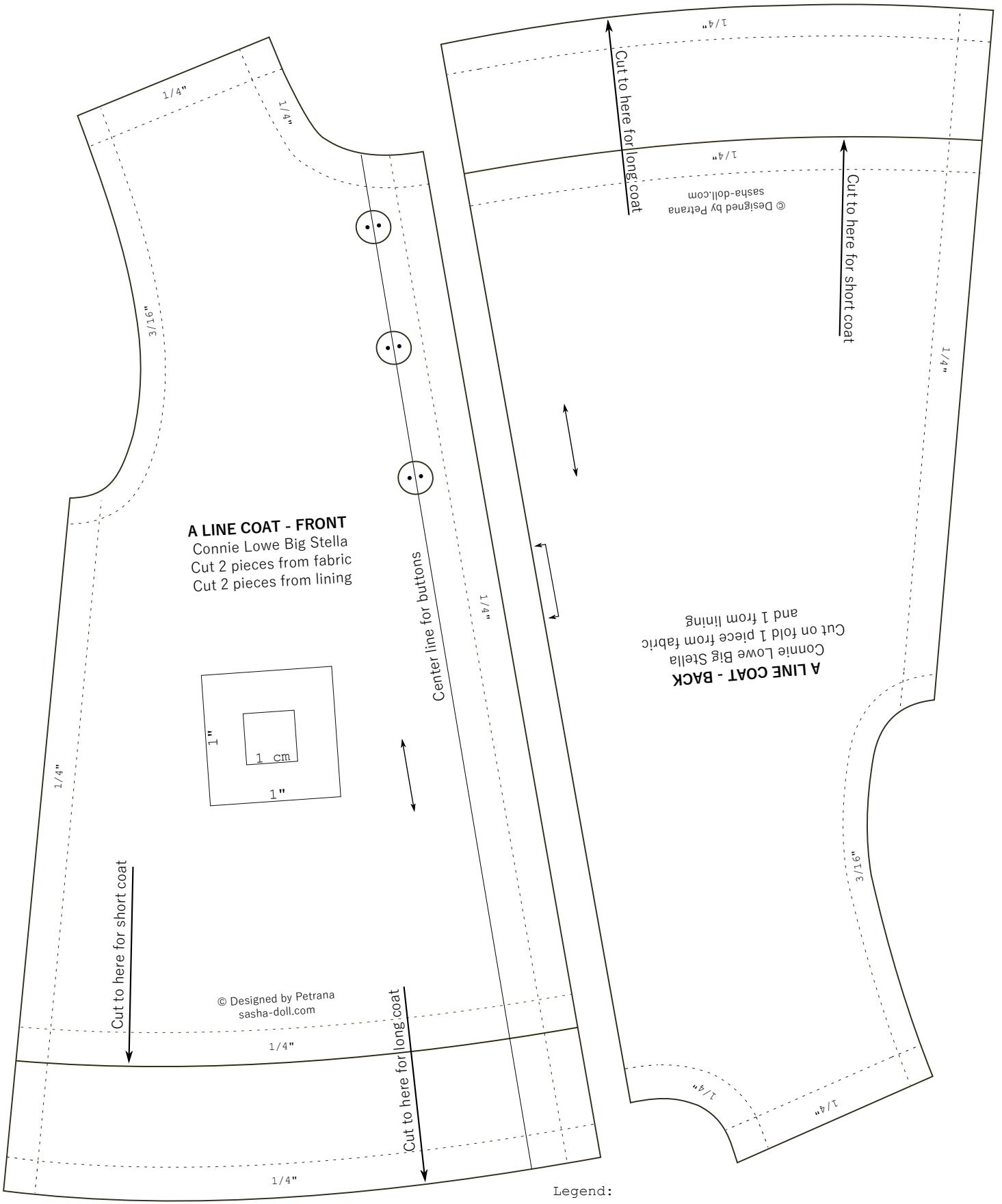
**A LINE COAT - SLEEVE**  
 Connie Lowe Big Stella  
 Cut 2 pieces from fabric  
 Cut 2 pieces from lining



© Designed by Petrana  
 sasha-doll.com

Legend:   
 ←→ grain line      ↵ fold fabric      3/16", 1/4" seam allowance

**Important: print page to 100% scale! (page 3 of 3)**



Legend:  
 ↔ grain line      ↔ fold fabric      3/16", 1/4" seam allowance